

## News at NYSIM

### **NYSIM welcomes nine Standardized Participants to the team!**

NYSIM employs 136 per-diem Standardized Participants (SPs). Our SPs portray a wide variety of cases and roles, such as patients, family members, learners, and health professionals. They are trained to provide written and verbal feedback to learners at all levels. Our OSCE case library has approximately 350 SP cases, serving as a central resource to the education community.

For SP contact information, submit a referral request here: <http://nysimcenter.org/standardized-participant-referral-request>

Learn more about the SP program here: <http://nysimcenter.org/services/spprogram>



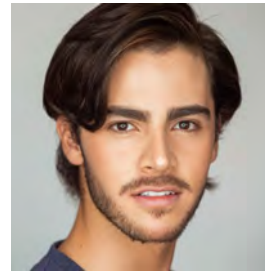
Khadija Bangoura



Cindy Im



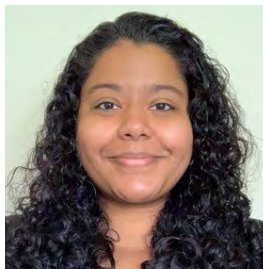
Despoina Blair



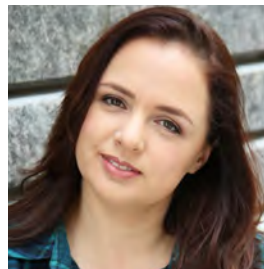
Andy Borda Cordova



Dwayne Grayman



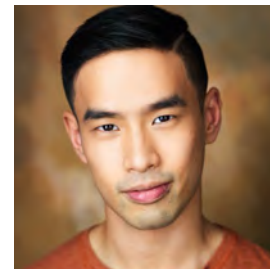
Ivana Greene



Paola Poucel



Michael Gaines



Nicky Khor

### **Teaching at NYSIM**

If you are interested in teaching with us, please see the link below to request a program here at NYSIM:

<http://nysimcenter.org/request-new-program>

Submit an education consult request to meet 1:1 with a Director who can answer questions, and help you develop your new or existing program!

<http://nysimcenter.org/request-simulation-education-consult>

Connect with us:

[www.nysimcenter.org](http://www.nysimcenter.org) 646.501.4000 [Twitter@NYSIMCenter](https://twitter.com/NYSIMCenter)  
LinkedIn: New York Simulation Center for the Health Sciences

Page 1 of 3

## Upcoming Events at NYSIM



### NYSIM Offers the American Heart Association's (AHA) **ACLS, BLS & PALS** courses!

#### Availability:

Monday, Tuesday, Thursday—Manhattan  
Wednesday—Brooklyn

#### Register, Course Schedule:

<https://nysimcenter.enrollware.com/schedule>

\*Enhanced safety protocols continue during COVID-19



Connect with us:

[www.nysimcenter.org](http://www.nysimcenter.org) 646.501.4000 [Twitter@NYSIMCenter](https://twitter.com/NYSIMCenter)  
LinkedIn: New York Simulation Center for the Health Sciences

## News at NYSIM

***The New York Simulation Center (NYSIM) is committed to supporting safe operations for all learners, faculty & staff.***

*Please note the following operational changes in order to support safe operating procedures:*

1. *NYSIM will adhere to recommended individual numbers per space which are posted throughout the simulation center.*
2. *Group sizes larger than 9 require attendees to be 14 days or more past the completion of their COVID-19 vaccination series; no exceptions.*
3. *All individuals entering Bellevue Hospital (therefore NYSIM) will require a temperature check in the Bellevue Lobby. Individuals may also be required to complete a symptom check.*
4. *All individuals will be required to use hand sanitizer as they enter NYSIM, and continue to follow good hand hygiene while in NYSIM.*
5. *All individuals will be asked to practice social distancing when possible and remain at least six feet apart even when wearing masks.*
6. *Surgical masks must be worn at all times while in NYSIM, unless alone in a closed room.*
7. *All individuals will be asked to report directly to the simulation rooms, when possible. Social distancing is required while individuals wait in the lobby.*
8. *No food or drink is permitted. All individuals will be asked to store any food/drink in a locker, or throw it away.*

*NYSIM will work with scheduled programs to adhere to the precautions above. If anyone has any questions/concerns they should contact [NYSIM@nyulangone.org](mailto:NYSIM@nyulangone.org). Leadership at NYSIM will respond promptly to the email.*

*Thank you,  
NYSIM Team*



**NYU Langone Health**

**Everyone is required to wear a face mask, and maintain social distance of 6 feet from others.**

A diagram showing two stylized human figures, one female and one male, standing on a horizontal line. A double-headed arrow between them is labeled "6 FEET". Both figures are wearing face masks.

**Wear your face mask** at all times in this facility.

**Clean your hands often** with soap and water or alcohol-based hand sanitizer. **Do not touch your face.**

Three icons: 1. A person wearing a mask with arrows pointing to the nose and chin, labeled "Cover your nose" and "Cover your chin". 2. A hand being washed with soap suds, labeled "Clean your hands". 3. A person touching their face with a red 'X' over it, labeled "Do not touch your face".

Connect with us:

[www.nysimcenter.org](http://www.nysimcenter.org) 646.501.4000 [Twitter@NYSIMCenter](https://twitter.com/NYSIMCenter)  
[LinkedIn: New York Simulation Center for the Health Sciences](https://www.linkedin.com/company/new-york-simulation-center-for-the-health-sciences)

Page 3 of 3