

## News at NYSIM

### NYSIM Welcomes New Simulation Operations Associate to the Team!



Pictured: Gabriella Bossio

We are proud to announce that Gabriella Bossio has joined NYSIM as per diem Simulation Operations Associate (SOA) on the Simulation Team. Gabriella Bossio joined the NYSIM team in August 2025. She earned her Bachelor of Science in Health Sciences from the University of South Florida, where she developed a strong foundation in healthcare systems and public health education. At NYSIM, Gabriella supports simulation-based learning by coordinating equipment setup, standardized patient sessions, and manikin operation to ensure a realistic and effective training environment. Gabriella is passionate about advancing medical education and creating collaborative learning experiences that enhance patient care and safety. She aspires to attend medical school in Europe to earn her MD and further her career in healthcare. Outside of her professional work, Gabriella enjoys running, traveling, and exploring art and architecture. Please join us in extending a warm welcome to Gabriella!

### NYSIM Welcomes New Standardized Participants (SPs)!

NYSIM employs 140+ per-diem Standardized Participants (SPs). Our SPs portray a wide variety of cases and roles, such as patients, family members, learners, and health professionals. They are trained to provide written and verbal feedback to learners at all levels.



**Chris Costa** (He/They)

Chris brings teaching and writing experience, and is also a dialect coach. They are fluent in Spanish, Portuguese and Conversational French.



**Emé Esquivel** (He/They)

Emé brings 4 months of SP experience with Einstein. He also has experience in teaching, behavioral therapy/hospice care and certified nursing assistant. They are fluent in Spanish.



**Bridie Jurasevich** (She/Her/Hers)

Bridie brings 7 years of SP experience at Rush Center for Simulation in Chicago. She also has written and verbal feedback skills.



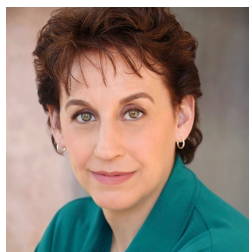
**Wiley Strasser** (He/They)

Wiley brings 4 years of SP experience at USCF. They are fluent in Spanish and have strong conversational skills.



**James Ross** (He/Him/His)

James brings 5 years of SP experience with Hackensack, Einstein and Rutgers Nursing.



**Lisa Sabin** (She/Her/Hers)

Lisa brings 1 year of SP experience with NYIT and Northwell. She also has corporate training and feedback skills.



**Joey Florez** (He/Him/His)

Joey brings teaching, acting, creative writing and playwright experience. He is fluent in Spanish.

Connect with us:

[www.nysimcenter.org](http://www.nysimcenter.org) 646.501.4000 [Twitter@NYSIMCenter](https://twitter.com/NYSIMCenter)  
[LinkedIn: New York Simulation Center for the Health Sciences](https://www.linkedin.com/company/new-york-simulation-center-for-the-health-sciences)

## News at NYSIM

### NYSIM Highlights: New Equipment

NYSIM is pleased to announce the procurement of two new adult patient simulators and two new BD Alaris PCU Pumps. MamaAnne is our newest maternal and birthing simulator (available starting February 12th), and SimMan Critical Care is our latest respiratory and critical care simulator (available starting April 8th). Mama Anne is equipped with an automatic delivery system that enhances realism and facilitates precise, and accurate birth movements. SimMan Critical Care enables the simulation of any respiratory condition and delivers tetherless, realistic ventilator responses at various clinical levels. The BD Alaris PCU Pumps provides users with a modular platform to customize infusion delivery based the needs of a patient.



MamaAnne

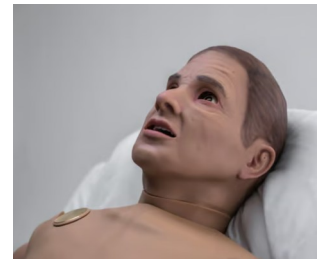


BD Alaris PCU Pump

#### BD Alaris PCU Pumps

##### Key Features:

- Allows users to customize infusion delivery by adding large pumps, syringe pumps, patient controlled analgesia (PCA) pumps, and respiratory monitoring modules
- Wirelessly transmits key drug and infusion therapy data, centralizing access to infusion and monitoring data



SimMan Critical Care

#### MamaAnne's Key Features:

- **Breathing:** spontaneous breathing synchronized with selected breath rate (0-60 bpm), variable respiratory rates; anterior and posterior lung sound auscultation sites
- **Circulation:** adjustable systolic / diastolic BP levels, bilateral carotid, brachial, radial, femoral, and pedal pulses synchronized with ECG
- **Deliveries and Drills:** occiput anterior and posterior delivery; postpartum hemorrhage (PPH) with internal uterus or clean bleed mat; breech delivery; shoulder dystocia
- **Pelvis Anatomy:** ischial spines, public bone, urinary catheterization, bi-manual compression
- **Movement:** articulating joints that facilitates supine, semi-recumbent, left lateral lithotomy and sitting birthing positions; 90-degree arm locking mechanism, realistic shoulder and hip joint rotation, leg bends at the knee; seizures / convulsions

#### SimMan Critical Care's Key Features:

- **Breathing:** simulated spontaneous breathing, bilateral and unilateral chest rise and fall; normal and abnormal breathing sounds
- **Ventilation:** tetherless ventilation management, switch between ventilation modes, seamless transition from volume to pressure control
- **Vascular:** tibial IO, bilateral preported IV access, humeral IO and deltoid IM, IV access
- **Cardiac:** extensive ECG library; heart sounds in four anterior locations; defibrillation and cardioversion
- **Circulation:** oscillometric or manual BP measurement, pulse strength variable with BP, pulse palpation detected and logged

### NYSIM Scholarship Spotlight:

NYSIM Newsletter Scholarship  
Submission



Have you presented or published scholarship related to simulation education? We're inviting faculty, scholars, and educators to submit their simulation-based research, presentations, and publications to be featured in an upcoming NYSIM Newsletter.

Share your contributions and inspire the educator community! Submit your work by completing the online form via the QR code to the left.

Connect with us:

[www.nysimcenter.org](http://www.nysimcenter.org) 646.501.4000 [Twitter@NYSIMCenter](https://twitter.com/NYSIMCenter)  
[LinkedIn: New York Simulation Center for the Health Sciences](https://www.linkedin.com/company/new-york-simulation-center-for-the-health-sciences)

Page 2 of 6

## News at NYSIM

### **Objective Structured Clinical Examinations (OSCEs) Spotlight:**

The “**Objective Structured Clinical Examinations (OSCEs), 10 steps to Planning and Implementing OSCEs and Other Standardized Patient Exercises,**” co-edited by **Sandra Zabar, MD**, the director of our Standardized Participant Program at NYSIM is available on Springer Nature Link.

NYSIM Assistant Dean of Simulation Education, **Donna Phillips, MD**, is a co-author on Chapter 10, “**Supporting Transitions Across the Medical Training Continuum with Simulation and Performance-Based Assessment,**” which contains information on two important annual simulations that take place at NYSIM, Night-onCall (NOC) and First Night-onCall (FNOC).

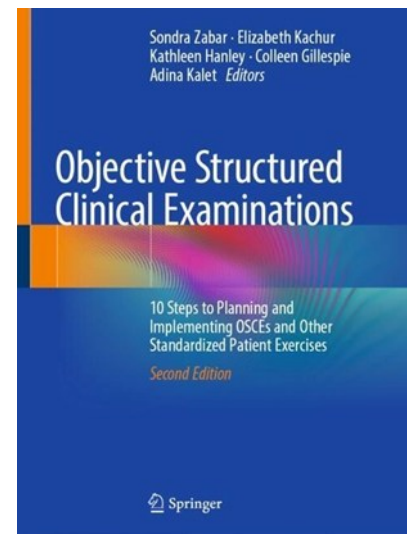
Our NYSIM colleagues **Brielle Blatt, Virginia Drda, Kathleen Allen, Gene Mamaril, Sean Overstreet, Willie Lombeida, and Katherine Tame** authored Chapter 12, “**How to Build and Manage an SP Program.**” This chapter is full of great tips for simulation center coordination and management.

This has been 5 years in the making and is a true collaboration, featuring 41 contributors from across NYU Langone Health and beyond the institution. OSCEs and other SP exercises are important teaching and assessment methodologies in health professions education, across disciplines and the continuum of training. The expanded edition includes 12 chapters with novel material and innovative best practices for OSCEs in every context:

1. Introduction: OSCEs: Past, Present and Future
2. Organizing OSCEs and Other SP Exercises in 10 Steps
3. Remediation of Learners Who Perform Poorly on an OSCE
4. Beyond the OSCE: Using Standardized Patients in the Clinical Setting
5. Post-Encounter Learning and Assessment of Clinical Reasoning: Patient Notes and Reflections
6. Data for Learning and Program Evaluation: Managing, Analyzing and Reporting OSCE Data
7. Scholarship and Education Research Registry
8. Performance-based Assessment in Practice
9. Simulating Virtual Care: Integrating Telemedicine into Objective Structured Clinical Training
10. Supporting Transitions Across the Medical Training Continuum with Simulation and Performance-Based Assessment
11. Objective Structured Teaching Exercises (OSTEs) from the Teacher’s Perspective: What, Why, When, and How?
12. How to Build and Manage an SP Program

We want to share this incredible accomplishment and help our medical education colleagues worldwide plan and implement *OSCEs in 10 steps!*

### **Hot off the press!**



### **Available on Springer Nature Link**

Most health sciences libraries provide free access: <https://link.springer.com/book/10.1007/978-3-031-88752-9>

**Get 20% off with this code: SPRAUT**



### **Connect with us:**

[www.nysimcenter.org](http://www.nysimcenter.org) 646.501.4000 [Twitter@NYSIMCenter](https://twitter.com/NYSIMCenter)  
[LinkedIn: New York Simulation Center for the Health Sciences](https://www.linkedin.com/company/new-york-simulation-center-for-the-health-sciences)

## News at NYSIM

### NYSIM Annual Report—FY2025

NYSIM is pleased to announce the publication of our fifth Annual Report. The fiscal year 2025 Annual Report summarizes the accomplishments and impact of our educational and professional development programs, staff professional development, achievements, engagement activities and scholarships.

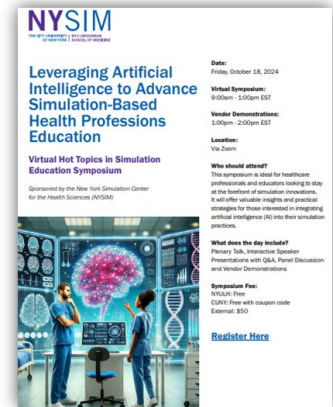
To view the current Annual Report, and past annual reports, visit <https://nysimcenter.org/annual-reports>.



### NYSIM Virtual Hot Topics in Simulation Education Symposium

Video recordings from the Virtual Hot Topics in Simulation Education Symposium: Leveraging Artificial Intelligence to Advance Simulation-Based Health Professions Education are now available on our website.

Visit <https://nysimcenter.org/symposium/hot-topics> to view the recordings from the recent and past symposiums!



### NYSIM Instructor & Program Coordinator Experience Survey

The **NYSIM Instructor and Program Coordinator Experience Survey** provides us with valuable feedback that we can use to enhance our systems, operations, and technological advances. We invite you to complete it every time you complete a program at NYSIM. NYSIM is committed to providing you and your learners with an optimal education experience.

We look forward to hearing from you!

Scan the QR code below to be directed to the survey:



Connect with us:

[www.nysimcenter.org](http://www.nysimcenter.org) 646.501.4000 Twitter@NYSIMCenter  
LinkedIn: New York Simulation Center for the Health Sciences

## Upcoming Events at NYSIM

### **NYSIM Fundamentals of Simulation Education (FUSE) Course 2026**

The 3-day NYSIM FUSE Course is the ideal immersive experience for all levels of simulation instructors. The course focuses on simulation design, management, and debriefing. Logistically it functions as a workshop where participants will gain the tools to take a problem or issue germane to them, craft their own learning objectives for a simulation, write their own case scenario, create their own checklists of simulation performance, pilot their simulation, and engage in debriefing practice all while receiving feedback from a community of educators. Join us and help light the FUSE to spark your simulation-based education!

The course will continue to be held live and onsite at NYSIM.

<https://nysimcenter.org/content/instructor-courses>

**2026 FUSE Registration is Open—Additional FUSE sessions will be announced soon!**

**February 18-20, 2026: Wednesday - Friday—Wait list only**

To request a spot on the waitlist click the following link:

<https://redcap.link/u5218pj3>

You will be contacted by Porsche Scott ([Porsche.Scott@nyulangone.org](mailto:Porsche.Scott@nyulangone.org)) to confirm your placement status. Please email Porsche Scott or [nysim@nyulangone.org](mailto:nysim@nyulangone.org) with any questions.

### **NYSIM Simulation-Based Education (SBE) Modules**

NYSIM SBE Modules offers great opportunities to explore basic simulation-based education concepts, simulation modalities, simulation instructional design, and standards of best practices in simulation. To access the NYSIM SBE Modules, please visit: <https://nysimcenter.org/sbe>

Connect with us:

[www.nysimcenter.org](http://www.nysimcenter.org) 646.501.4000 [Twitter@NYSIMCenter](https://twitter.com/NYSIMCenter)  
[LinkedIn: New York Simulation Center for the Health Sciences](https://www.linkedin.com/company/new-york-simulation-center-for-the-health-sciences)

## News at NYSIM



***The New York Simulation Center (NYSIM) is committed to supporting safe operations for all learners, faculty & staff.***

***Food and drinks are not permitted at NYSIM. Please remind your learners to refrain from bringing food to NYSIM, and ask them to store food and drink in their backpack or a locker. Thank you for your help in maintaining a clean environment.***

***Masks are now optional at NYSIM. The new masking safety guidelines have been updated to align with NYU Langone Health policy and reflect Department of Health recommendations. We will continue to make masks available at the front desk. We ask that anyone with fever, cough, or other flu and COVID-like symptoms not come to NYSIM.***

***Programs may elect to require masks for SPs, learners and faculty. This will be at the discretion of the program, and the responsibility of the program to communicate and enforce mask-wearing with the participants.***

***If anyone has any questions/concerns they should contact [NYSIM@nyulangone.org](mailto:NYSIM@nyulangone.org). Leadership at NYSIM will respond promptly to the email.***

***Thank you,  
NYSIM Team***

Connect with us:

[www.nysimcenter.org](http://www.nysimcenter.org) 646.501.4000 [Twitter@NYSIMCenter](https://twitter.com/NYSIMCenter)  
[LinkedIn: New York Simulation Center for the Health Sciences](https://www.linkedin.com/company/new-york-simulation-center-for-the-health-sciences)

Page 6 of 6