

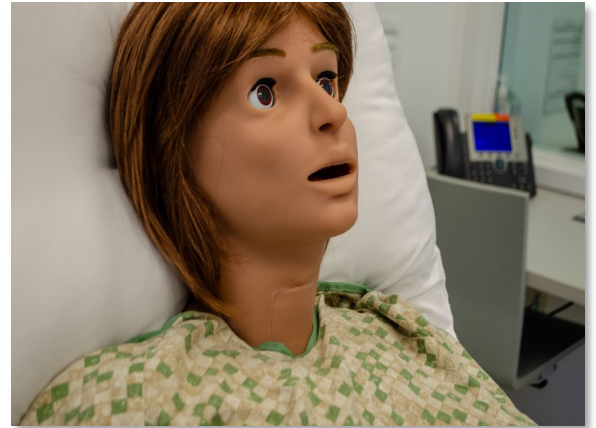
## News at NYSIM

### NYSIM Highlights: New Equipment

NYSIM is pleased to announce the acquisition of our new adult patient simulator, Quinn, a GAUMARD SUSIE S2400 comprehensive care simulator. Quinn's multipurpose features and dual gender versatility will allow our CUNY and NYULH learners and faculty to perfect their clinical skills, including but not limited to: advanced medication administration, airway management, multisystem clinical procedures, resuscitation and women's health assessment.

#### Quinn is equipped with the following abilities:

- **Airway:** normal and abnormal sounds, tracheal intubation, tongue edema, laryngospasm, and pharyngeal swelling
- **Breathing:** anterior and posterior lung sounds, chest rise, nasal cannula placement
- **Breast Examination:** inspection, palpation and identification of right and left breast pathologies
- **Cardiac:** heart sounds, monitor, capture, pace, and cardiovert using real defibrillators
- **Gastrointestinal:** bowel sounds, ostomy care, NG, OG, G-tube procedures
- **Gynecological:** examination and procedures; uteri with external and internal pathologies
- **Medication Administration:** subclavian central line, bilateral PIV, SQ and IM injection sites
- **Neurological:** blinking, pupillary reaction, and programmable seizures



### NYSIM Instructor & Program Coordinator Experience Survey

The new **NYSIM Instructor & Program Coordinator Experience Survey** provides us with valuable feedback that we can use to enhance our systems, operations, and technological advances. We invite you to complete it every time you complete a program at NYSIM. NYSIM is committed to providing you and your learners with an optimal education experience.

We look forward to hearing from you!

Scan the QR code below to be directed to the survey:



Connect with us:

[www.nysimcenter.org](http://www.nysimcenter.org) 646.501.4000 [Twitter@NYSIMCenter](https://twitter.com/NYSIMCenter)  
[LinkedIn: New York Simulation Center for the Health Sciences](https://www.linkedin.com/company/nysimcenter)

## News at NYSIM

### NYSIM Welcomes New Standardized Participants to the Team!

NYSIM employs 130+ per-diem Standardized Participants (SPs). Our SPs portray a wide variety of cases and roles, such as patients, family members, learners, and health professionals. They are trained to provide written and verbal feedback to learners at all levels. NYSIM has a case library of 350 SP cases for directors to easily retrieve and share as a resource with the education community.

For SP contact information, submit a referral request here: <http://nysimcenter.org/standardized-participant-referral-request>



Adrienne Unae



Idalmis Garcia Rodriguez



Jazmin Williams



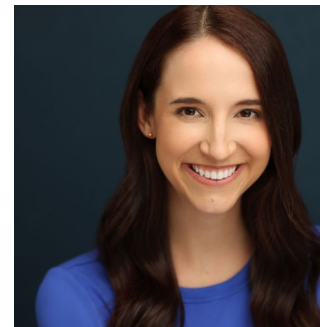
Kirstin Louie



Monica Rounds



Sami Binder



Stephanie Anderson

### Teaching at NYSIM

If you are interested in holding a program at NYSIM, please visit the link below to request a program:  
<http://nysimcenter.org/request-new-program>

Submit an education consult request to meet 1:1 with a Director who can answer questions, and help you develop your new or existing program! <http://nysimcenter.org/request-simulation-education-consult>

Comments, suggestions and questions to [NYSIM@nyulangone.org](mailto:NYSIM@nyulangone.org) are always welcome to create a better learning and teaching environment for our faculty and learners.

Connect with us:

[www.nysimcenter.org](http://www.nysimcenter.org) 646.501.4000 [Twitter@NYSIMCenter](https://twitter.com/NYSIMCenter)  
[LinkedIn: New York Simulation Center for the Health Sciences](https://www.linkedin.com/company/nysimcenter)

## Upcoming Events at NYSIM

### **NYSIM Fundamentals of Simulation Education (FUSE) Course 2025**

The 3-day NYSIM FUSE Course is the ideal immersive experience for all levels of simulation instructors. The course focuses on simulation design, management, and debriefing. Logistically it functions as a workshop where participants will gain the tools to take a problem or issue germane to them, craft their own learning objectives for a simulation, write their own case scenario, create their own checklists of simulation performance, pilot their simulation, and engage in debriefing practice all while receiving feedback from a community of educators. Join us and help light the FUSE to spark your simulation-based education!

The course will continue to be held live and onsite at NYSIM. <http://nysimcenter.org/>

### **2025 FUSE registration is open!**

**January 15 - 17, 2025: Wednesday - Friday - waitlist only**

**July 9 - 11, 2025: Wednesday - Friday - open seats**

**August 6 - 8, 2025: Wednesday - Friday - open seats**

To register for an open seat or request a spot on the waitlist click the following link:

<http://www.nysimcenter.org/courses/instructor-courses>

You will be contacted by Porsche Scott ([Porsche.Scott@nyulangone.org](mailto:Porsche.Scott@nyulangone.org)) to confirm your placement status. Please email Porsche Scott or [nysim@nyulangone.org](mailto:nysim@nyulangone.org) with any questions.

### **NYSIM Simulation-Based Education (SBE) Modules**

NYSIM SBE Modules offers great opportunities to explore basic simulation-based education concepts, simulation modalities, simulation instructional design, and standards of best practices in simulation. To access the NYSIM SBE Modules, please visit: <https://nysimcenter.org/sbe>

Connect with us:

[www.nysimcenter.org](http://www.nysimcenter.org) 646.501.4000 [Twitter@NYSIMCenter](https://twitter.com/NYSIMCenter)  
LinkedIn: New York Simulation Center for the Health Sciences

## News at NYSIM



***The New York Simulation Center (NYSIM) is committed to supporting safe operations for all learners, faculty & staff.***

***Food and drinks are not permitted at NYSIM. Please remind your learners to refrain from bringing food to NYSIM, and ask them to store food and drink in their backpack or a locker. Thank you for your help in maintaining a clean environment.***

***Masks are now optional at NYSIM. The new masking safety guidelines have been updated to align with NYU Langone Health policy and reflect Department of Health recommendations. We will continue to make masks available at the front desk. We ask that anyone with fever, cough, or other flu and COVID-like symptoms not come to NYSIM.***

***Programs may elect to require masks for SP's, learners and faculty. This will be at the discretion of the program, and the responsibility of the program to communicate and enforce mask-wearing with the participants.***

***If anyone has any questions/concerns they should contact [NYSIM@nyulangone.org](mailto:NYSIM@nyulangone.org). Leadership at NYSIM will respond promptly to the email.***

***Thank you,  
NYSIM Team***

Connect with us:

[www.nysimcenter.org](http://www.nysimcenter.org) 646.501.4000 [Twitter@NYSIMCenter](https://twitter.com/NYSIMCenter)  
[LinkedIn: New York Simulation Center for the Health Sciences](https://www.linkedin.com/company/new-york-simulation-center-for-the-health-sciences)